

Option 3.

Large batch processing.

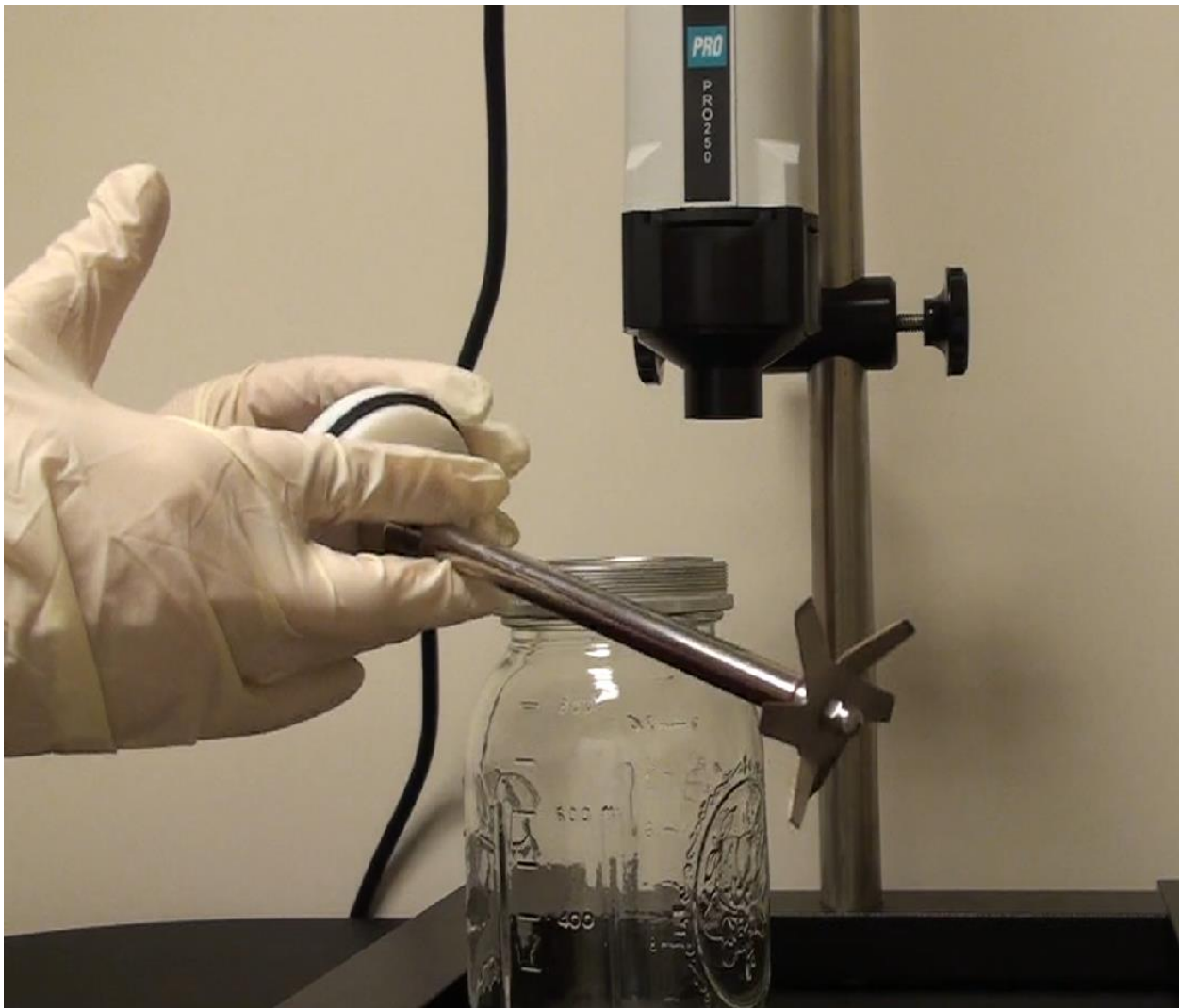
200ml of solution with 33 grams of sample.

Equipment:

PRO250 homogenizer with 946ml glass chamber assembly w/2" blade AND 30x200mm Generator Probe

01-01250 with 15-19946 and with 02-30200

On stand assembly 80-00250



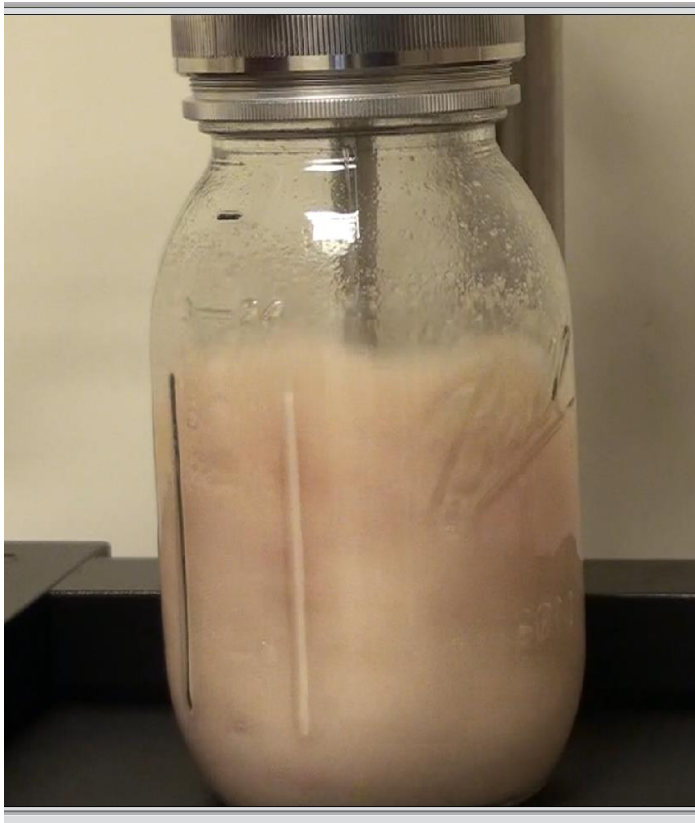


The blade system is part of our PRO Safety Sealed System: The PRO SAFETY SEAL homogenizer Tubes and Chamber Assemblies are the industry's safest method of homogenizing with either a blade or a rotor stator generator. Their design provides a two way barrier, protecting the operator from hazardous aerosols generated during processing while it isolates the sample from external contaminants.

In addition, the unique design of PRO SAFETY SEAL homogenizer assemblies will not permit the user to operate the homogenizer with the blade exposed. The blade assembly cannot be engaged to the drive motor unless the chamber is attached.

Sample was processed for approximately 30 seconds at continuously increasing speed.

Container was stationary the whole time.



Almost all of the fibers were broken down. However, complete homogenization was not apparent (there was still some pieces of meat non-broken down).



(These were the only fibrous pieces left not broken down).

Pieces were then tapped back into the container and a 30x200mm PRO Quick Connect Generator Probe was placed off center in the container. Speed was gradually increased for approximately 30 seconds.

Complete homogenization was achieved. A minor amount of fibrous deposits were left.





The generator is shown disassembled with the only remaining fibrous components left. Notice the significant decrease in size compared to large batch processing with a generator probe only.